

Historic, archived document

Do not assume content reflects current scientific knowledge, policies, or practices.

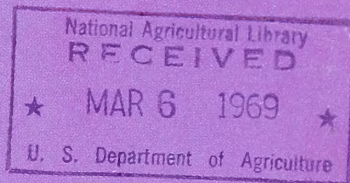
62



ANGEL FACE

R0

Spring 1969



THE
Star
Rose


GUIDE
TO GARDEN
PLEASURE

THE CONARD-PYLE CO.
WEST GROVE, PA. 19390



Angel Face (Shown on front cover)

**ALL-AMERICA AWARD
WINNER FOR 1969**


 Floribunda. (Swim & Weeks.) *Plant Pat.* 2792. The first lavender rose to be honored with an All-America Award and sure to win a place in the affections of rose lovers. Buds are urn shaped, of lovely ruby-pink opening to charming 3½ to 4-inch blooms of rich lavender with a band of ruby tinting the petal edges. The flower is double, exquisitely formed, with wavy and scalloped petals. Penetrating fragrance. Long-lasting clusters carry 3 to 7 or more blooms. The plant grows vigorously but low and bushy, with plenty of bloom.

\$3.50 ea.—3 or more, \$3.10 ea.

All-America Award

ALL-AMERICA AWARD WINNER FOR 1969

Comanche

 Grandiflora. (Swim & Weeks.) *Plant Pat.* 2855. This exciting new rose is a striking, colorful spectacle. The pointed buds are a deep brick-red, unfurling to show the glowing fires within. The face of the open flower is orange-red and the reverse rosy red. The vivid blooms are 3½ to 4 inches across, with about 50 petals. Strong stems hold the blooms, sometimes singly but more often 3 or 4 to a stem. Foliage is exceptionally dark and thick textured. Medium tall (to 5 feet), bushy and vigorous, producing a profusion of bold color all season.

\$3.75 ea.—3 or more, \$3.30 ea.

COMANCHE

OFFER No. 127

All-America Winners

COMANCHE
MISS ALL-AMERICAN BEAUTY
SCARLET KNIGHT

\$9.90



OFFER No. 127A


3 Newest, Finest Floribundas

ANGEL FACE
EUROPEANA (See p. 15)
GAY PRINCESS (See p. 16)


\$8.75



Winners

Miss All-American Beauty Hybrid Tea. (The House of Meiland.) Plant Pat. 2625. In our  opinion, the finest pink rose ever introduced . . . a warm, glowing, solid pink, clean and crisp. Buds are medium long and tapering, slowly unfurling to extra size blooms with 50 or more beautifully recurved petals. Stems are long and strong . . . an invitation to cut and enjoy the blooms in the house. A sturdy plant, medium tall, with sage-green foliage. Blooms abundantly. Pleasant tea fragrance.

\$3.75 ea.—3 or more, **\$3.30 ea.**

Scarlet Knight Grandiflora. (The House of Meiland.) Plant Pat. 2692. Each flower is big and bright, and  each stem carries from 3 to 5 of these beauties. Buds are deep red, of nice tapering form. As the velvety-petaled bloom opens, it becomes bright scarlet and this vibrant color does not blue. The big, vigorous canes are covered with thick, rich green leaves. Good stems bear the 4½-inch, mildly scented flowers, and give lots of bloom all season. Average height, vigorous and upright.

\$3.75 ea.—3 or more, **\$3.30 ea.**

SCARLET KNIGHT



MISS ALL-AMERICAN
BEAUTY





MISTER LINCOLN

More All-America

Mister Lincoln Hybrid Tea. (Swim & Weeks.)
Plant Pat. 2370. The finest red rose



of all time. The tall plant is sturdy and heavily branched, with reddish canes and thorns. Foliage, too, is reddish at first, then glossy dark green as it develops. The 6-inch, lively red blooms are very full and purposeful-looking . . . coming from firm, pointed buds of rich dark maroon. Buds become urn shaped as the wide outer petals begin to curl back from the high centers. Even on dull days Mister Lincoln gives forth a rich, satisfying perfume. Sturdy stems make it an ideal cut flower.

\$3.50 ea.—3 or more, \$3.10 ea.



PASCALI

Pascali ALL-AMERICA AWARD WINNER
FOR 1969



Hybrid Tea. (Lens.) Plant Pat. 2592. Exquisite beauty of flower and good plant habit combine to make Pascali an unusually fine white rose. The dark foliage is especially thick textured and abundant. The delicate-looking buds are followed by high-pointed blooms of soft creamy white with an ivory-yellow center. Its name—for the paschal or Easter season—is suited to its color. Blooms are medium large and double, with over 35 petals that curl back as they open. The high center lasts well, and every specimen is perfectly formed, even in poor weather. Strong stems are excellent for cutting. A tall plant, often growing over 4 feet high, with strong canes and healthy, dark green foliage. Full of bloom until late in the season. A valuable new rose.

\$4.25 ea.—3 or more, \$3.85 ea.

SPRING 1969 ORDER SHEET

Star Roses

THE CONARD-PYLE CO.

West Grove, Pa. 19390

Quan.	HYBRID TEAS & GRANDIFLORAS	Each	3 for	Total
	Americana	\$3.50	\$9.30	
	Aventure	3.00	7.95	
	Blanche Mallerin	2.25	6.00	
	Camelot	3.25	9.00	
	Charlotte Armstrong	2.25	6.00	
	Chicago Peace	3.25	9.00	
	Christian Dior	3.00	7.95	
	Christopher Stone	2.00	5.25	
	Chrysler Imperial	3.00	7.95	
	Comanche	3.75	9.90	
	Condesa de Sastago	2.00	5.25	
	Confidence	2.75	7.20	
	Crimson Glory	2.00	5.25	
	Eclipse	2.25	6.00	
	Garden Party	3.50	9.30	
	Garden State	3.00	7.95	
	Golden Girl	3.00	7.95	
	Granada	3.50	9.30	
	Helen Traubel	3.50	9.30	
	Indiana	2.75	7.20	
	John F. Kennedy	4.00	10.65	
	Lowell Thomas	2.25	6.00	
	Lucky Lady	4.00	10.65	
	Mirandy	2.25	6.00	
	Miss All-American Beauty	3.75	9.90	
	Mister Lincoln	3.50	9.30	
	Mojave	3.00	7.95	
	Montezuma	3.00	7.95	
	Mount Shasta	3.00	7.95	
	Pascali	4.25	11.55	
	Peace	2.00	5.25	
	Pink Peace	3.00	7.95	
	Polynesian Sunset	3.75	9.90	
	Queen Elizabeth	3.00	7.95	
	Royal Highness	3.25	9.00	
	Scarlet Knight	3.75	9.90	

Total this column \$ _____

Quan.	HYBRID TEAS & GRANDIFLORAS (Cont'd.)	Each	3 for	Total
	Soeur Therese	\$2.00	\$5.25	
	Summer Rainbow	3.00	7.95	
	Summer Sunshine	3.75	9.90	
	Talisman	2.00	5.25	
	White Knight	2.75	7.20	

Quan.	FLORIBUNDA ROSES	Each	3 for	Total
	Angel Face	\$3.50	\$9.30	
	Circus	2.75	7.20	
	Europeana	3.00	7.95	
	Fashion	2.25	6.00	
	Floradora	2.00	5.25	
	Gay Princess	3.25	9.00	
	Goldilocks	2.25	6.00	
	La Fontaine	2.00	5.25	
	Polka	2.50	6.60	
	Vogue	2.25	6.00	

Quan.	CLIMBING ROSES	Each	3 for	Total
	Blaze	\$2.25	\$6.00	
	Clair Matin	3.00	7.95	
	Climbing Crimson Glory	2.50	6.60	
	Golden Showers	3.00	7.95	
	New Dawn	2.25	6.00	
	Pillar of Fire	3.00	7.95	

Quan.	SPECIAL ROSES	Total
	Otto Linne — \$2.25 ea. — 3 or more, \$2.00 ea. — 25 or more, \$1.85 ea.	
	Sea Foam — \$3.00 ea. — 3 or more, \$2.65 ea. — 25 or more, \$2.40 ea.	
	The Fairy — \$2.25 ea. — 3 or more, \$2.00 ea. — 25 or more, \$1.85 ea.	

Total this column \$ _____

Quan.	HARVEST GIANT MUMS	Total
	Bronze Song	
	Golden Arrow 95c each;	
	Indian Summer 3 or more	
	Pumpkin of one kind,	
	September Song 85c each.	
	Silver Song	

Quan.	CUSHION MUMS	Total
	Cameo 95c each;	
	Muted Sunshine 3 or more	
	Powder River of one kind,	
	Ruby Cushion 85c each.	

Quan.	FOOTBALL MUMS	Total
	Albion 95c each;	
	Kansas 3 or more	
	Martin Riley of one kind,	
	Xenia Field 85c each.	

Quan.	LARGE FLOWERED MUMS	Total
	Betty	
	Chapel Bells	
	Color Guard	
	Gusto 95c each;	
	High Noon 3 or more	
	Ruth Lehman of one kind,	
	Sea Urchin 85c each.	
	Starlet	
	Sunloving	
	Trail Boss	

Quan.	SPIDER MUMS	Total
	Bridesmaid 95c each;	
	Bunbu 3 or more	
	Luyona of one kind,	
	Topflight 85c each.	

Quan.	DELPHINIUMS	Total
	NOTE: Delphinium Prices are: Any 6 for \$3.50; any 10 for \$5.50; any 20 for \$10.50.	
	Astolat	
	Blue Jay	
	Galahad	
	King Arthur	
	Summer Skies	

Total this column \$ _____

ORDER SHEET
CONTINUED ON OTHER SIDE



Quan.	SPECIAL OFFERS	Total
	We reserve the right to substitute for sold-out varieties in Special Offers, but changes cannot be made upon request.	
	Offer No. Each Offer	
127	3 Roses	\$9.90
127-A	3 Flori. Roses	8.75
130	3 Roses	9.95
131	4 Roses	9.95
133	4 Roses	12.45
135	4 Roses	11.95
137	4 Roses	11.95
140	Surprise Package	8.95
140-A	5 Min. Roses	6.45
141	4 Flori. Roses	6.90
143	6 Giant Mums	4.95
144	4 Spider Mums	3.35
144-A	4 Cushion Mums	3.35
144-B	4 Football Mums	3.35
146	10 Mums	7.95
146-A	17 Mums	12.90
147	9 Delph.	4.95
148	20 Delph.	9.75

Column Total

Total From Other Side

Add 50c packing charge if order is less than \$10.00

Add 6% Sales Tax for Pennsylvania deliveries

TOTAL ORDER

We pay all shipping charges, no other cost to you.

THANK YOU FOR YOUR ORDER
It will receive our careful attention

Date _____

Amount Enclosed \$ _____

TERMS

Please send payment with order or before shipment.
No C. O. D.'s

DO NOT WRITE IN THESE SPACES PLEASE

ORDER NO.	ZIP NO.	PP ZONE	ADV. CODE	SUB.	P.C.
CLASS	AMOUNT	TAX	TOTAL	SERIALS	

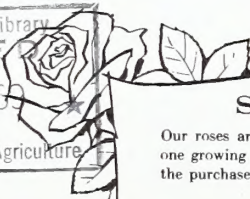
NOTE: If the variety you select is sold out, we will send you a similar kind of equal or greater value at no extra charge to you. If you do not wish this special service, please check here However, we will give this service on "Special Offers" when necessary even without this authorization from you.

Orders accepted subject to stock unsold. Prices are for dormant Roses, Spring 1969, 2-year, field-grown, guaranteed to bloom. NOTE: All "3-for" and group offer prices apply ONLY when plants are shipped together to one address. "3-for" prices apply to 3 of one variety only. All plants and items in this catalog shipped parcel post prepaid direct to your door. Please add 50c packing charge if order is less than \$10—see explanatory note, page 24 of catalog. Plants will be shipped at proper time for planting in your locality.

SPRING 1969

NTL AGRIC LIB P
DIVISION OF REFERENCE
WASHINGTON DC 20250

National Agricultural Library
RECEIVED
MAR 6 1969
U. S. Department of Agriculture



Star Rose® Guarantee

Our roses are guaranteed to grow and bloom as they should for one growing season. If they do not, we will replace them or refund the purchase price.

Roses for All America

Camelot Grandiflora. (Swim & Weeks.) *Plant Pat. 2371.*
This luminous coral-pink rose with shimmering iridescence comes so close to the ideal of most gardeners that it earns the right to be named for the land of perfection—Camelot. The buds, high centered at first, then somewhat cupped, open to 5-inch blooms with rich, spicy fragrance. A little patch of white at the base of the petals gives the center of the flower a pleasant light touch. Abundantly petaled blooms of firm substance are borne generally three or more on long, strong-stemmed candelabras and come freely all season long. Even summer heat does not stop bloom production or fade the lovely color. The plant is tall, broad, quite vigorous and covered with lustrous, deep green foliage. A fast grower that deserves a place in home gardens, where it will soon establish itself as a favorite.

\$3.25 ea.—3 or more, \$3 ea.



OFFER No. 130
3 Outstanding Roses

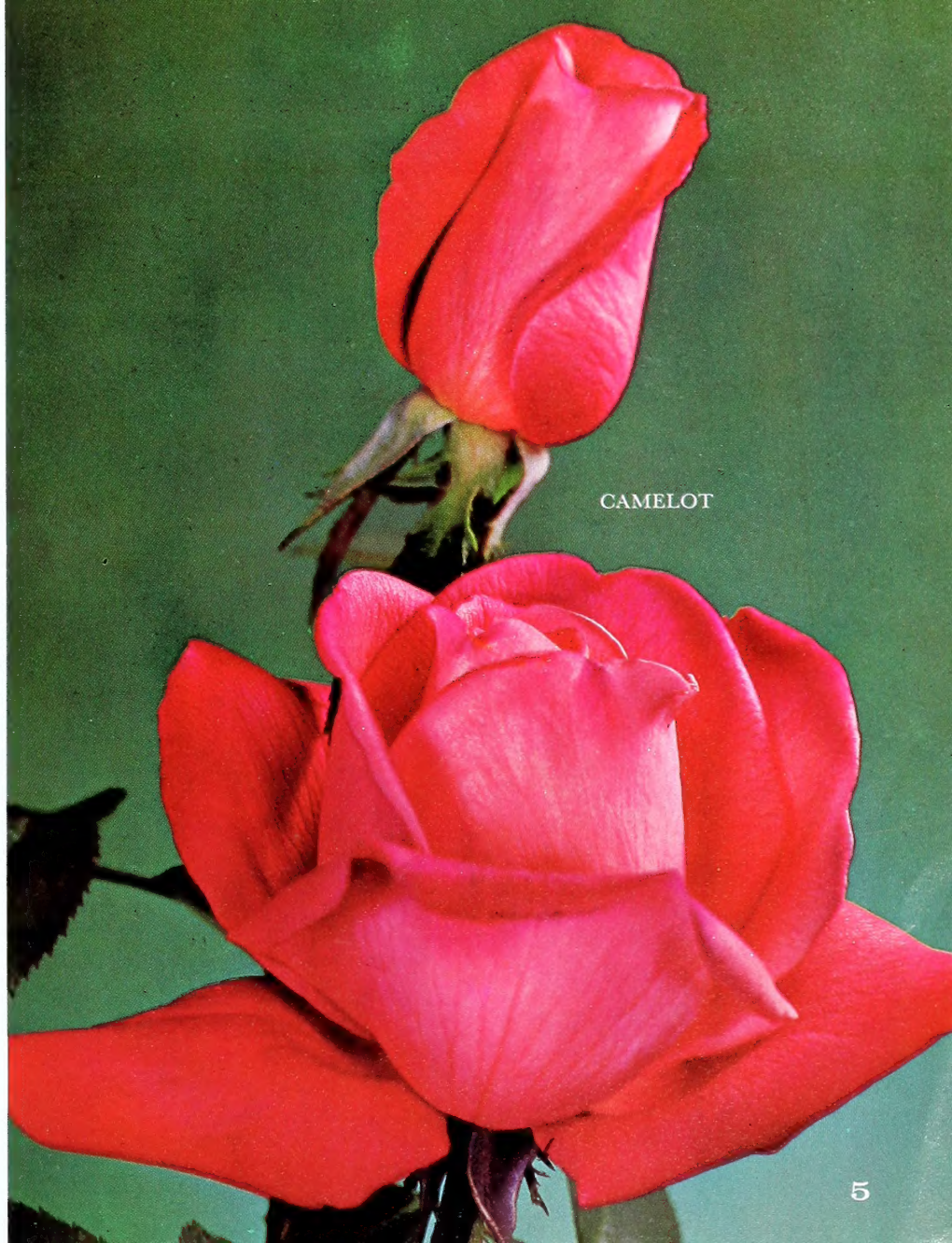
CAMELOT
MISTER LINCOLN
PASCALI

\$9.95



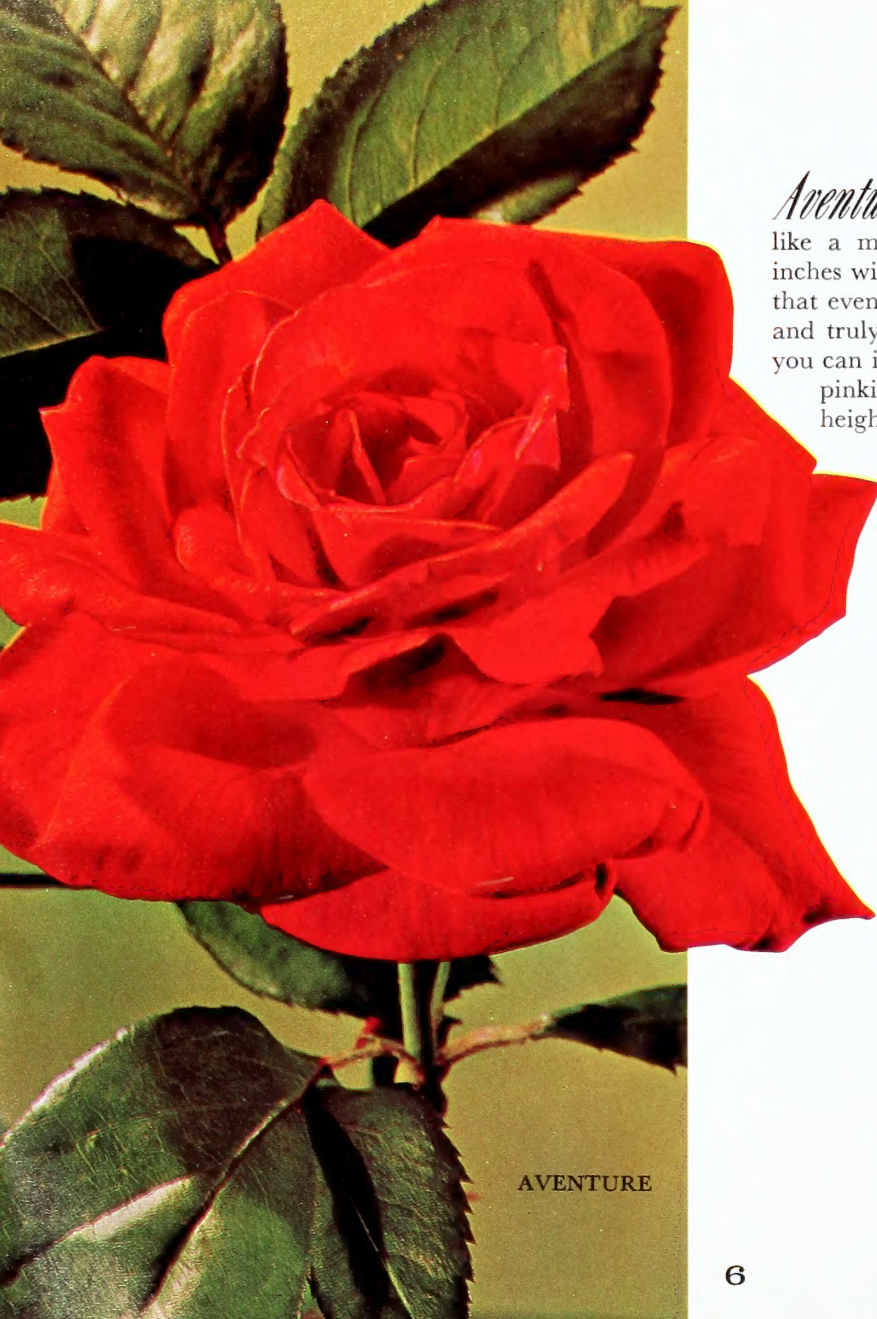
Star Rose® Guarantee

Our roses are guaranteed to grow and bloom as they should for one growing season. If they do not, we will replace them or refund the purchase price.



CAMELOT

Shimmering Beauties.



AVENTURE

Aventure Hybrid Tea. (Croix.) *Plant Pat. 2500.* This brilliant orange hue draws one like a magnet. Rounded petals form a flower 4½ inches wide, with 45 to 50 petals and a pointed center that eventually opens to cupped shape. Pleasing form and truly “smashing” color . . . the brightest orange you can imagine, with the reverse of the petals a more pinkish orange. Light tea fragrance. Medium height, with strong canes.

\$3 ea.—3 or more, \$2.65 ea.



OFFER No. 131

For Rich Color

AVENTURE
GOLDEN GIRL
INDIANA
SUMMER RAINBOW

\$9.95

Summer Rainbow Hybrid Tea. (R. Jelly.) *Plant Pat. 2746.* As refreshing as a summer shower. Many shades of crimson and yellow blended into a colorful combination. As the flower ages, the crimson tones pass to fuchsia-pink. Buds are urn shaped, solid and well sculptured. Full, high-centered blooms of large size, with 45 to 50 satiny petals. Pleasing tea fragrance. An excellent cutting rose. Average height.

\$3 ea.—3 or more, \$2.65 ea.

SUMMER RAINBOW



Every One



Golden Girl Grandiflora. (The House of Meiland.) *Plant Pat. 1912.*
A warm and friendly yellow rose that produces a tremendous amount of bloom. Magnificent double flowers with 40 to 45 petals. The deep gold color looks as if it had been poured down into the center of the bloom, to spill out over the soft ivory outer petals. Moderate tea fragrance. Stems are of suitable length for cutting, and blooms come plentifully. One of the very best pure yellow roses. The plant is upright, shapely, well branched and vigorous, with clean light green leaves.

\$3 ea.—3 or more, \$2.65 ea.

Indiana Hybrid Tea. (The House of Meiland.) *Plant Pat. 2597.*
True, solid, bright cardinal-red with pleasant light perfume. Fully double, cup-shaped blooms of excellent form and profile. The large flowers of 35 to 40 velvety petals are held firmly upright on strong stems of medium length. They are set so close to the compact, well-branched bush that they seem to create a floating rich tapestry of green and red. The plant grows to moderate Hybrid Tea height but its vigor and bloom production are above average.

\$2.75 ea.—3 or more, \$2.40 ea.



INDIANA



GOLDEN GIRL





SUMMER SUNSHINE



OFFER No. 133

Sure to Please

CHRYSLER IMPERIAL

LUCKY LADY

PINK PEACE

SUMMER SUNSHINE

\$12.45



Summer Sunshine Hybrid Tea. (Swim.) *Plant Pat. 2078.* Here's a deep yellow rose that is especially cheering on a dull day. Urn-shaped buds open to a sunburst of bloom. Flowers are of medium size, cup shaped, with about 25 satiny smooth petals. They open easily, regardless of the weather and are fine for cutting. Both the form and the color hold up well. The vigorous, semi-upright plant is moderately tall, well branched and attractive, with grey-green leaves.

\$3.75 ea.—3 or more, \$3.30 ea.



CHRYSLER IMPERIAL

Chrysler Imperial Hybrid Tea. (Lammerts.) *Plant Pat. 1167.* A famous rose known and loved for its wonderful deep red color and richly satisfying fragrance. Its excellent form begins with the full, solid buds and carries through to the large blooms of 40 to 50 huge petals of fine substance. Blooms are just about perfect . . . high centered, with an interesting curl to the outer petals, and come usually one to the stem. The deep crimson-red color and the intoxicating perfume provide a combination that most people simply cannot resist. The plant is strong, handsomely shaped and of medium height. Plenty of vigorous foliage provides a most effective setting for a most glamorous rose.

\$3 ea.—3 or more, \$2.65 ea.



**Why We
Can Make
Our Star
Rose
Guarantee**

Roses are our business, and because we are convinced that the plants we raise are second to none in quality we can guarantee them to grow and bloom for one growing season; otherwise we will replace them or refund the purchase price. This is a generous offer, and the control we hold over our rose growing operations is what makes this guarantee possible . . . from meticulous preparation of the soil to packaging and shipping.

LUCKY LADY



PINK PEACE

Lucky Lady Grandiflora. (Swim & Armstrong.) *Plant Pat. 2829*. A lovely pink color. Urn-shaped buds and double flowers made up of 25 to 30 large petals. Almost a bicolor—light clear pink on the face and deeper, reddish pink on the reverse. Fragrance light and pleasing. Strong stems, perfect for cutting. Free blooming, tall and vigorous.



\$4 ea.—3 or more, \$3.55 ea.

Pink Peace Hybrid Tea. (The House of Meiland.) *Plant Pat. 1759*. In habit of growth, size and strength of foliage, and general air of command, this fine Hybrid Tea shows its relationship to the Peace rose. The plant is very strong and bushy, with large, abundant leaves and thick flower stems. The color is a beautiful rich pink with a shimmering highlight. The fully double blooms have a high pointed center surrounded by large petals of excellent substance and long lasting ability. Rich fragrance.

\$3 ea.—3 or more, \$2.65 ea.



CONFIDENCE

Confidence Hybrid Tea. (The House of Meiland.) *Plant Pat. 1192*. Lovely form and mouth-watering color. An intricate blend of pastel peach tones . . . bright, light yellow at the base of the petals with a delicate shading of shrimp-pink at the petal edges, many times separated with a splash of luminous off-white. The streamlined buds open to high-centered, 5-inch blooms of exhibition standard and with pleasing perfume. A good sound plant, upright, bushy and solidly branched. The finest pastel-colored rose we grow.

\$2.75 ea.—3 or more, \$2.40 ea.



**OFFER
No. 135**

**Four Hard to
Equal**

AMERICANA
CONFIDENCE
JOHN F. KENNEDY
QUEEN ELIZABETH

\$11.95

John F. Kennedy Hybrid Tea. (Boerner.) *Plant Pat. 2441*. A beautiful large white rose of great style and wonderful fragrance. The long, gracefully furled buds are lemon-white. In both bud and open stage the flowers are high centered and fully double, averaging 35 to 40 broad petals. The pure white, 5 to 6-inch, open blooms hold their firm texture through all kinds of weather. Tall and upright to about 4 feet, with dark, healthy foliage. Good strong canes are crowned with bloom clusters all season. Fragrance is especially noticeable.

\$4 ea.—3 or more, \$3.55 ea.

JOHN F. KENNEDY



Full of Grace and Style

Queen Elizabeth Grandiflora. (Lammers.) *Plant Pat.*

1259. This regal rose dominates any scene. The rich pink color is never harsh, but always light in tone. Buds come both singly and several on a stem. Flowers are cupped when fully expanded, and are borne in steady succession all summer long. This plant has the unique and admirable habit of pushing its canes upward, to form a strong green pillar. The first and still the finest Grandiflora. Every planting of roses should include at least one Queen Elizabeth.

\$3 ea.—3 or more, \$2.65 ea.

Americana Hybrid Tea. (Boerner.) *Plant Pat.* 2058. A combination of stirring red color, delightful fragrance and enormous size. The brilliant carmine-red grows even more intense as the big blooms slowly open to their full 6-inch size. Petals are wide and velvety, arranged in a high pointed form, with those around the outer edge rolled back in a most beautiful way and framing the elegant high center. Strong stems of medium length. Vigorous and upright to about 3 feet, with leathery, cress-green foliage abundantly covering the plant. Bloom continues all through the hottest weather, making Americana a fine plant for garden decoration from June to October. A standby, providing the color and the perfume that are so popular.

\$3.50 ea.—3 or more, \$3.10 ea.

QUEEN ELIZABETH



AMERICANA



MONTEZUMA

Montezuma Grandiflora. (Swim.) *Plant Pat. 1383*. A true Grandiflora with wonderful Hybrid Tea-like blooms and a plentiful supply of flowers. It is a brilliant rosy salmon color that holds well. Over it all is a creamy sheen, extremely smooth and melting. The bud is rather short, but shapely. Blooms are high centered, composed of 40 petals, and are borne on medium long, strong stems. Foliage is a semi-glossy light green. A tall rose, growing up to 5 feet; it is bushy and well branched, and deserves ample growing space.

\$3 ea.—3 or more, \$2.65 ea.

Enchanting

Polynesian Sunset Hybrid Tea. (Boerner.) *Plant Pat. 2530*. An exotic name for an exotic-looking rose that will appeal to those who want large flower size and brilliant color above all else. It is coral-orange with a warm, iridescent glow that lights up the bloom. Exquisite buds and huge 6½-inch flowers, fully double but with open centers. Tips of the petals are gracefully waved and there is a touch of yellow at the base. Both the color and the flower form hold for the entire life of the bloom, both outdoors and in the house. A heady, fruity scent suggests the tropics. Reddish foliage turns glossy dark green as it matures. Hardy and vigorous, the plant produces blooms on long cutting stems.

\$3.75 ea.—3 or more, \$3.30 ea.

OFFER No. 137
Vibrant, Luscious
Beauty

- GARDEN PARTY
- GRANADA
- MONTEZUMA
- POLYNESIAN SUNSET

\$11.95



POLYNESIAN
SUNSET

Colors

Granada Hybrid Tea. (Lindquist.) *Plant Pat. 2214*. These charming buds are an indication of what to expect from the open flower. The face of the large ruffled petals is a bright mixture of scarlet, lemon-yellow and orange-pink hues, stronger at the edge. The whole surface of the multicolored, 4-inch flower has a vibrant, cheerful look that is irresistible. The flowers as well as the buds are beautifully formed and usually come in candelabras. Pronounced spicy fragrance. A vigorous plant, blooming freely.

\$3.50 ea.—3 or more, \$3.10 ea.

Garden Party Hybrid Tea. (Swim.) *Plant Pat. 1814*. The sculptured blooms of this fine plant are a soft delicate combination of rich ivory in the center of the bloom, giving way to creamy tones and finally a delicious flush of appleblossom-pink. In spite of these soft colors, Garden Party is a bold, dramatic rose with 25 to 30 large flaring petals of excellent texture and substance. Bloom is plentiful and continues all season long. The plant is tall, very strong and well branched. Handsome foliage, reddish underneath and red veined, provides the perfect background for this very lovely, alluring rose. Its distinguished ancestry—its parents are Peace and Charlotte Armstrong—is apparent in many features of Garden Party.

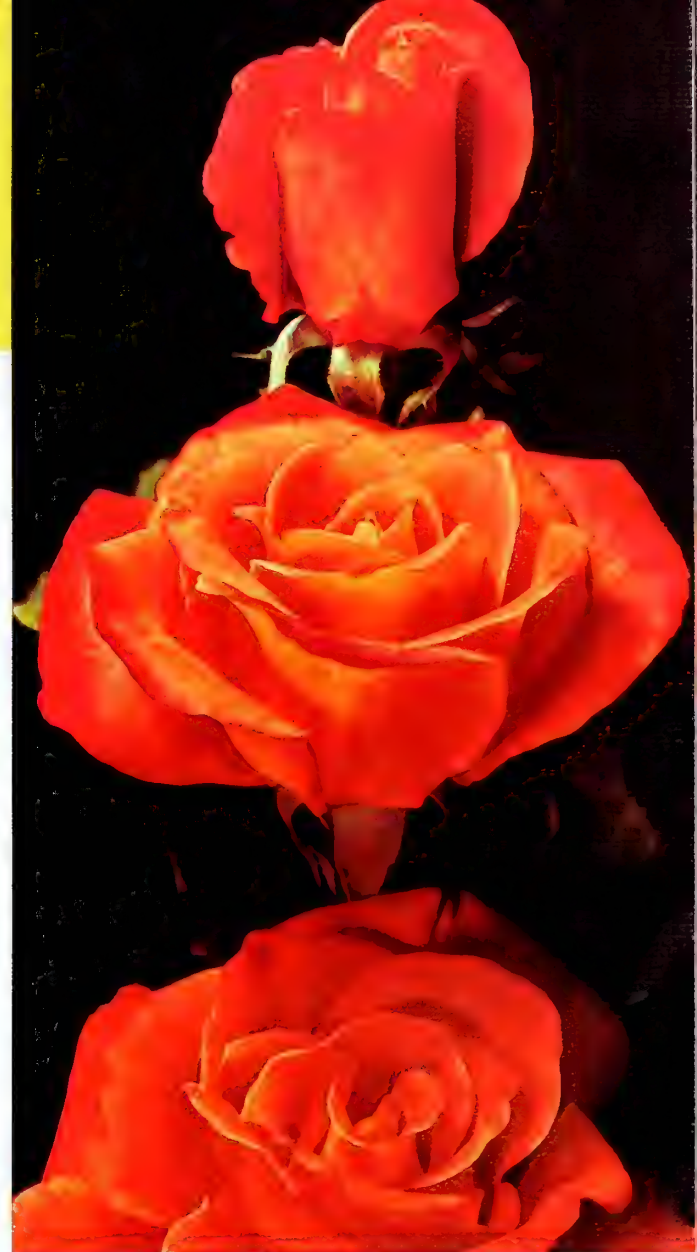
\$3.50 ea.—
3 or more, \$3.10 ea.



Star Roses
Are Shipped
Direct to
Your Door

We pride ourselves on shipping quality plants in an efficient and proper manner. The package holding your rose will keep it in perfect condition for a week to ten days after you receive it. If you can't plant at once, store it in a cool dark place—do not open until ready to plant.

GARDEN PARTY



GRANADA

Peace Hybrid Tea. (The House of Meilland.) Fabulous describes it . . . a judgment confirmed by the fact that Peace has the highest rating (9.4) of any by the American Rose Society. The flower stems, foliage and canes are of unbelievable size and sturdiness, and the flower more than matches the plant. The pale gold to cream-colored petals are as if carved from ivory, and the pink penciling at the edge gradually creeps over the flower.

\$2 ea.—3 or more, \$1.75 ea.



PEACE

Also for Your Pleasure

BLANCHE MALLERIN. Hybrid Tea. (Mallerin.) A classic pure white, beautifully modeled. Sweet fragrance. Bushy, upright. Easy to grow.

\$2.25 ea.—3 or more, \$2 ea.



CHARLOTTE ARMSTRONG. Hybrid Tea. (Lammerts.) Buds deep carmine-red, long and elegant. Flower bright rose-red. A tall grower and abundant bloomer. A favorite everywhere.

\$2.25 ea.—3 or more, \$2 ea.

CHICAGO PEACE. Hybrid Tea. (Johnston.) *Plant Pat. 2037.* A truly great rose with livelier color and more fragrance than Peace. Huge blooms on a superb plant.

\$3.25 ea.—3 or more, \$3 ea.



CHRISTIAN DIOR. Hybrid Tea. (The House of Meilland.) *Plant Pat. 1943.* Glowing crimson. Exhibition blooms, large and double. Tall; steady bloom production.

\$3 ea.—3 or more, \$2.65 ea.

CHRISTOPHER STONE. Hybrid Tea. (Robinson.) Rich scarlet-crimson. Pointed buds and large flowers. Fragrant. Strong, low growing, free blooming.

\$2 ea.—3 or more, \$1.75 ea.

CONDESA DE SASTAGO. Hybrid Tea. (Dot.) A yellow and rose-scarlet bicolor. Very full, fragrant flowers in abundance all season. Extra bushy.

\$2 ea.—3 or more, \$1.75 ea.

CRIMSON GLORY. Hybrid Tea. (Kordes.) Velvety crimson, heavily perfumed. Blooms freely and continuously. Low-growing but strong plant. A long-time favorite.

\$2 ea.—3 or more, \$1.75 ea.

ECLIPSE. Hybrid Tea. (Nicolas.) Slender bud with pronounced sepals that emphasize its gracefulness. Clear yellow, pleasantly fragrant. Tall and vigorous.

\$2.25 ea.—3 or more, \$2 ea.

GARDEN STATE. Grandiflora. (The House of Meilland.) *Plant Pat. 2349.* Deep cool pink. Light tea perfume. Large, firm-textured blooms on a tall plant.

\$3 ea.—3 or more, \$2.65 ea.



HELEN TRAUDEL. Hybrid Tea. (Swim.) *Plant Pat. 1028.* Exquisite shell-pink and apricot, high-centered blooms on long stems. Spicy scent. A tall grower and continuous bloomer.

\$3.50 ea.—3 or more, \$3.10 ea.



LOWELL THOMAS. Hybrid Tea. (Mallerin.) Rich deep yellow, bright and cheerful. Light fragrance. Strong stems and good foliage on a medium height plant.

\$2.25 ea.—3 or more, \$2 ea.



MIRANDY. Hybrid Tea. (Lammerts.) Huge buds and double flowers of dusky wine-red. Wonderful spicy perfume. Robust bush. Blooms open best in hot weather.

\$2.25 ea.—3 or more, \$2 ea.



MOJAVE. Hybrid Tea. (Swim.) *Plant Pat. 1176.* Lovely form, coppery orange color, rich fragrance. Excellent for cutting. Tall, sturdy, free blooming.

\$3 ea.—3 or more, \$2.65 ea.

MOUNT SHASTA. Grandiflora. (Swim & Weeks.) *Plant Pat. 2132.* An enormous white rose on a long stem. Broad, satiny petals. Very tall grower.

\$3 ea.—3 or more, \$2.65 ea.



ROYAL HIGHNESS. Hybrid Tea. (Swim & Weeks.) *Plant Pat. 2032.* Delicate pastel pink with high center and thick soft petals. Pronounced perfume. Fine plant.

\$3.25 ea.—3 or more, \$3 ea.

SOEUR THERESE. Hybrid Tea. (Gillot.) Buttercup-yellow. Large, full flowers of good substance and shape. Sturdy plant of average height.

\$2 ea.—3 or more, \$1.75 ea.

TALISMAN. Hybrid Tea. (Howard.) The first multicolor—orange and rose color. Best in spring and fall.

\$2 ea.—3 or more, \$1.75 ea.



WHITE KNIGHT. Hybrid Tea. (The House of Meilland.) *Plant Pat. 1359.* Clean pure white, with curled petals. Perfect for cutting. Healthy, upright grower.

\$2.75 ea.—3 or more, \$2.40 ea.

Europeana



Floribunda. (G. de Ruiter.) *Plant Pat. 2540*. To see is to believe that Europeana must be one of the finest Floribundas ever. Its enormous trusses of bloom are so heavy and full of color and life that they cannot fail to attract admiring comment. The cupped, satiny red flowers, about 2½ inches in diameter, have 25 to 30 ruffled petals and are carried 15 to 20 on a stem. It would seem that the entire strength of a plant would be needed to produce one such stem—but several clusters are borne on each low, compact bush. And they last and last, both outdoors and when brought into the house where one bloom cluster stays fresh for a week. Foliage is very large, dark and leathery. A true landscape or bedding Floribunda that will give complete satisfaction anywhere. Both Holland and France have awarded it gold medals, and its All-America citation indicates that here in America also it has gained highest recognition.

\$3 ea.—3 or more, \$2.65 ea.



OFFER No. 140A Miniature Roses



Miniatures are grown exactly like other roses, in small plots of their own or in rock gardens and as dainty borders. Vigorous and hardy, they grow 10 to 14 inches tall and bloom profusely. Perfect little buds and flowers, always charming.

5 Miniature Roses—our selection, all different, for \$6.45
Guaranteed value at least \$7.50



EUROPEANA

Floribunda Roses

NOT ILLUSTRATED

CIRCUS. Floribunda. (Swim.) *Plant Pat. 1382.* Red, yellow, pink and orange colors in a wonderful blend. The bushy, rugged plant bears the 2½ to 3-inch blooms in profusion in enormous clusters.



\$2.75 ea.—3 or more, \$2.40 ea.

FASHION. Floribunda. (Boerner.) Soft coral-peach-pink that holds well. The oval, deep peach buds open slowly to 3 to 3½-inch flowers of fine form and substance. Quite fragrant. About 3 feet tall.



\$2.25 ea.—3 or more, \$2 ea.

FLORADORA. Floribunda. (Tantau.) Showy, 50-petaled blooms of brilliant geranium or cinnabar-red. Flowers of good form in sprays of 6 to 12. Vigorous, upright plant of medium height, blooming freely.



\$2 ea.—3 or more, \$1.75 ea.

GAY PRINCESS. Floribunda. (Boerner.) *Plant Pat. 2763.* A lovely soft pink Floribunda with Hybrid-Tea shaped flowers. Captivating in the garden and exquisite when cut. Bushy, medium tall and quite vigorous.



\$3.25 ea.—3 or more, \$3 ea.

GOLDILOCKS. Floribunda. (Boerner.) Yellow flowers in long-lasting clusters, becoming lighter as they mature. Double, cupped form. A dense, rather spreading bush of average to low height, producing bloom steadily.

\$2.25 ea.—3 or more, \$2 ea.

LA FONTAINE. Floribunda. (The House of Meiland.) *Plant Pat. 2040.* Good deep yellow flowers up to 5 inches across, semi-double and borne abundantly and continuously. Low growing, with leathery, rich green leaves.

\$2 ea.—3 or more, \$1.75 ea.

POLKA. Floribunda. (The House of Meiland.) *Plant Pat. 1939.* A lively shimmering pink. Cupped blooms with 40 to 45 velvety petals. Regularly formed clusters. Medium height, dense and bushy; very free blooming. Tea fragrance.

\$2.50 ea.—3 or more, \$2.20 ea.

VOGUE. Floribunda. (Boerner.) A marvelous display of bloom, color, growth and all-round appeal. Large flowers in masses . . . each a soft, inviting coral-red. Plant is tall, upright and quite vigorous. Fine for cutting.



\$2.25 ea.—3 or more, \$2 ea.

OFFER No. 141 4 Floribunda Roses

All Different

\$6.90

Guaranteed value at least \$8.00

Climbers

NOT ILLUSTRATED

CLAIR MATIN. Everblooming. (The House of Meiland.) *Plant Pat. 2186.* Beautiful, semi-double pink blooms in large clusters. Very thick foliage, good for screening. Ideal tall shrub.

\$3 ea.—3 or more, \$2.65 ea.

CL. CRIMSON GLORY. Repeat Blooming. (A. Naungayan.) A handsome, velvety crimson-red climber with large, well-formed flowers. Intense fragrance. A vigorous Climber with good foliage.

\$2.50 ea.—3 or more, \$2.20 ea.

NEW DAWN. Everblooming Climber. (Somerset.) Soft blush-pink, fragrant flowers of good size, against glossy dark foliage. The hardy plant grows fast, to 15 or 20 feet.

\$2.25 ea.—3 or more, \$2 ea.

PILLAR OF FIRE. Everblooming. (Shamburger.) *Plant Pat. 2329.* A very tall shrub or pillar rose to 8 feet or more. Vivid flowers of sparkling coral-red, in clusters.

\$3 ea.—3 or more, \$2.65 ea.

Golden Showers Everblooming Climber. (Lammerts.) *Plant Pat. 1557.* Its free-blooming habit has placed this rose in the top rank of Climbers. In fact, to date it is the only Climber to be judged worthy of the All-America Award. It produces fragrant, 5-inch blooms of solid daffodil-yellow . . . many'the first year, and literally covers itself with bloom the following seasons. Amazingly vigorous. Canes are so strong that the plant will almost stand by itself. It will reach a height of 6 to 8 feet.



\$3 ea.—3 or more, \$2.65 ea.

Star

Blaze New everblooming kind. (Kallay.) The brilliant red Climber seen everywhere, from pillar to post. This new strain gives huge masses of flowers in June and again in the fall, with many blooms in between. Individual flowers are medium size, 2 to 3 inches across, and slightly fragrant. The large flower clusters are borne in great profusion. Very hardy and vigorous. Absolutely foolproof. Most gardeners with space for only one climbing rose will choose Blaze because of its great performance.

\$2.25 ea.—3 or more, \$2 ea.

GOLDEN SHOWERS



Climbing Roses



VERSATILE *Shrub* ROSES

The Fairy (Bentall.) This beautiful 2 to 3-foot shrub bears hundreds of seashell-pink flowers in large clusters all season. So sturdy and hardy that it will flourish almost anywhere, even in partial shade. Very resistant to disease and insects. Multitudes of pink blooms from spring to frost.

\$2.25 ea.—3 or more, \$2 ea.—25 or more, \$1.85 ea.

Otto Linne (Lambert.) Grows to about 3 to 4 feet, its strong canes carrying huge trusses of deep rose-pink flowers. Foliage is a light, clear green, glossy and very full. Exceptionally vigorous. One truss of flowers makes a whole bouquet. A care-free, disease-resistant rose, as hardy as any other flowering shrub.

\$2.25 ea.—3 or more, \$2 ea.—25 or more, \$1.85 ea.

Sea Foam Hybrid Shrub Rose. (Ernest Schwartz.) *Plant Pat. 2463.* The 2 to 3-inch, double blooms of pure white become a delicate cream color as they age. This tough, hardy, tremendously vigorous yet lovely rose is almost completely free of disease or trouble of any kind. Fine as a specimen plant, as a border, a broad low hedge, or pillar. Clusters of bloom are produced continuously all season.

\$3 ea.—3 or more, \$2.65 ea.—25 or more, \$2.40 ea.

BLAZE



THE FAIRY



OTTO LINNE

SEA FOAM



COLORFUL HARVEST GIANTS—BIGGEST OF ALL MUMS

INDIAN SUMMER



Indian Summer From mid-September until frost, Indian Summer gives you tremendous 7-inch blooms—a striking deep red-bronze with a gold reverse on each petal. A really rich and dramatic fall color. Tall grower. Rich foliage covers the plant completely.

Golden Arrow This is a real football type flower. The fine deep golden yellow incurves to form a very substantial bloom up to 6 inches across. This is one of the late September blooming varieties and, in our opinion, one of the very best yellow mums.

Silver Song A very fine pure white, solid, semi-incurved formation with flowers up to 5 inches. Outstanding vigor and production of bloom. Grows to medium height, with attractive, heavy foliage. Blooms about September 15.

Pumpkin An unusual butterscotch color that holds well. The rounded bloom has perfect flower formation on compact plants. Large 5-inch blooms make outstanding cut flowers. This classic mum grows to medium height and produces its golden blooms in late September.

September Song (Not illustrated.) One of the first mums to flower. This medium rose-pink variety blooms continuously from the first flowering until hard freeze. Compact, medium height plant. Blooms about September 15. Exceptionally fine for cutting, too.

Bronze Song (Not illustrated.) This is a low, compact grower with very big flowers in solid bronze. Flowers in mid-September. It is an excellent variety for borders or for the front row of your mum bed. Begins blooming about September 15.

ALL HARVEST GIANTS: 95c ea.—3 or more of a kind, 85c ea.

SILVER SONG

PUMPKIN

OFFER No. 143

**Six Harvest
Giants**

BRONZE SONG
GOLDEN ARROW
INDIAN SUMMER
PUMPKIN
SEPTEMBER SONG
SILVER SONG

\$4.95

GOLDEN
ARROW

CHOICE MUMS OF VARYING TYPES ALL MUMS **95c ea., 3** OR MORE OF ONE KIND **85c ea.**

**HUGE, UNUSUAL
ARTISTIC
SPIDER MUMS**



Bumbu An exquisite Spider mum of orchid-pink, with all the delicacy of a jewel. Grows 30 inches tall and blooms about October 25.

BRIDESMAID. Beautiful soft lavender-pink. Good for potting. Height 24 inches. Comes into bloom about October 25.

LUYONA. Rich deep golden yellow, with petals that tend to "spoon." About 30 inches tall, blooming in late October.

TOPFLIGHT. A giant pure white with a very firm center. Height 32 inches. Blooms about October 28.

OFFER No. 144
All 4 Spider Mums
\$3.35

**WONDERFUL
COLORFUL
CUSHION MUMS**



Ruby Cushion The best red of its class. Fully double blooms cover the foliage, keeping their color well. About 14 inches tall. Mid-September.

CAMEO. Medium-sized, lavender-pink becoming lighter as it matures. Compact, 15-inch plant blooming about September 22.

MUTED SUNSHINE. Colorful yellow with many spoon-like petals and anemone center. 14 inches tall. September 15.

POWDER RIVER. Purest white. Very fine. 15 inches tall. September 15.

OFFER No. 144A
All 4 Cushion Mums
\$3.35

**FOOTBALL
MUMS**



Kansas Superb orange-bronze. Well-formed flowers of good substance. Height 30 inches. October 15.

ALBION. An excellent early white incurved variety. It is a large solid globe of waxy perfection. Grows 28 inches tall and blooms October 10.

MARTIN RILEY. Warm medium yellow. Strong stems and fine growing habit. Height 28 inches. Blooms in mid-October.

XENIA FIELD. Rose-pink, with an incurved center. Tall (36 inches), blooming in mid-October.

OFFER No. 144B
All 4 Football Mums
\$3.35

All MUMS 95c each
3 or more of one kind, 85c each

Mums to Highlight



Ruth Lehman The very large and artistic flowers are often as much as 6 inches across. Creamy white touched with pink in cool weather. Very vigorous plant growing 2½ feet tall, useful in every garden. Blooms about September 25.



Gusto A wonderful addition to the cushion mums. Glowing wine-red with an overcast of deep lavender. Double blooms up to 2 inches across, holding their color well. Plants 18 inches high and wide. Blooms in late September.



Sea Urchin Petals are distinctly quilled. Center of the large (4-inch) flower is deep yellow, outer petals softer yellow. Good rounded habit, 15 inches tall. Heavy dark foliage. Bloom starts about September 20.

20



High Noon Very early—often begins to bloom by the first of September. Especially valuable, therefore, for localities where freezing weather comes early in the fall. Beautiful 4-inch blooms of deep yellow, matchless in their brilliance. Weatherproof, always delightful. Grows to a height of 2 feet.



Sunloving Shapely, 2-inch blooms from lemon to golden yellow in color. Extra free blooming over a long period, starting in mid-September. A compact-growing, rounded plant, 14 inches high and wide. A sure spot of cheer and color.



Starlet A semi-double, 2-inch flower with spoon-like petals of medium bronze color. The yellow center is conspicuous, which adds to the over-all effect. The bushy, 16-inch plant blooms freely from late September on.

Your Autumn Garden

All MUMS 95c each
3 or more of one kind, 85c each



Trail Boss Flowers of cactus type with narrow quilled petals. The color is an intriguing blend of ruddy peach, walnut and gold with an over-all haze of yellow. Sturdy and always reliable. Grows 2 feet tall and blooms about September 20.

Chapel Bells Blooms up to 4 inches across, touched with cream as they open but becoming a brilliant pure white. Fully double decorative type. Deep green foliage shows off the dazzling white without detracting from it. 2 feet tall; late September.

Betty Very neat and crisp. The color is rich salmon-pink, each petal newly minted. Flowers 3 inches in diameter are carried erect on the 30-inch plant, starting around the first of October.



Color Guard Splendid bright crimson mum with well-shaped, long-lasting flowers, each one large and full. They are set off by healthy, dark green foliage on a compact, 20-inch plant. Begins to bloom in early October and produces an excellent garden effect.



OFFER No. 146

10 Mums in
Color on these
two pages

Only \$7.95



OFFER No. 146A

All 17 Mums
illustrated in
Color on pages
18, 19, 20, 21

Only \$12.90
Save \$3.25



**Get Bushel Baskets Full of
Magnificent Color This Fall!**

These easy-to-grow Mums will amaze you with their tremendous quantities of bloom and their rich, vivid fall colors. Plant them where they will have at least a half day of sunlight and always supply adequate moisture. In late June cut the growing stems off to within 4 to 6 inches of the ground for bushier plants.



SUMMER SKIES

Pacific



OFFER No. 147

3 each:

ASTOLAT, GALAHAD,
SUMMER SKIES

9 plants for
\$4.95

ANY 6 FOR \$3.50



Summer Skies A light heavenly blue with a white bee, like fleecy clouds against a summer sky. The finest light blue delphinium, and an asset to any hardy border planting.

Astolat Lovely tones ranging from pale blush through shades of lilac-pink to deep raspberry-rose, with brown and black bees. A richly stunning combination. Huge double flowers all summer.

ASTOLAT

22



Hybrid Delphiniums

ANY 10 FOR \$5.50

• ANY 20 FOR \$10.50



OFFER No. 148

4 each of all 5 Delphinium

20 plants for

\$9.75



Galahad Enormous, clear white flowers averaging 3 inches in diameter, with a white bee as well. Blooms of heavy texture on pyramidal spikes, with flowers well spaced on the stem. Good branching habit. Resists mildew well. D deservedly popular, for it represents the peak of perfection.

Blue Jay A reliable blue, offering shades from medium to dark blue. A good grower and a little different in its striking and intense color shadings. Dark contrasting bee. Large flowers, symmetrically shaped and perfectly placed on the strong stem.

King Arthur Rich royal purple with a velvety texture and large white bee. One of the most brilliant ever developed. Long flower spikes on thin, woody stems. Very graceful, excellent for cutting and show purposes as well as garden decoration.



We Are Pleased To Send You This Special Garden Guide...

... as a reminder that planting time—and Spring are almost here. True, you still have time to order, but so often Spring comes on us before we realize it and we don't want you to miss the opportunity to get your order in and your roses planted.

This special catalog contains a selected group of roses, mums and delphiniums. We know you will be pleased with any of the kinds you order. *We do urge you to order now* while a good selection is still available and there is still time to plant. However, we do ship plants through the middle of May just in case your order is delayed.

PLANTING GUIDE

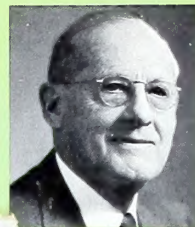


This 24-page booklet is a helpful and simple guide to rose planting and culture. It describes and pictures the steps to successful rose growing. It also contains information on pruning, spraying and dusting. Gives facts, too, about planting and growing perennials and bulbs. We have prepared this Planting Guide as a service to you. A copy is sent FREE with every order.

NOTES ON ORDERING BY MAIL

- "3-for" prices apply to 3 of one variety shipped to one address at one time.
- "Offer" prices apply only when shipped to one address at one time. Because of the special prices, we cannot make changes in offers. We do substitute in offers late in the season when certain kinds may be sold out.
- With your permission, if a kind you order is sold out, rather than disappoint you, we will send you another kind of equal or greater value at no extra charge to you. On special Offers we give this service whenever necessary even without your instructions to do so.
- Prices are for dormant roses, Spring, 1969.
- WE PAY THE POSTAGE ON ALL ORDERS shipped within the continental U. S. A. On orders over \$10, packing is free—otherwise there is a packing charge of 50c per order.
- Pennsylvania customers, please add 6% sales tax.
- Rose plants are medium height (American Rose Society rating) unless otherwise mentioned.
- Rose plants are 2-year-old, field-grown, No. 1 grade—top quality—and will be shipped at the proper planting time for you in your locality.

Phone Orders Welcome—Telephone (215) 869-2426



Dear Gardening Friends:

In the dead of winter it is easy enough to postpone the ordering of plants, such as roses, that will not be set in the ground until weeks or even months later. But time flies... and in a few weeks roses will again be in bloom, transforming our yards and gardens into places of great beauty.

So this catalog goes out as a reminder to those who have not yet placed their orders. There is STILL TIME, if you act at once, TO ORDER STAR ROSES. We have a fine supply of the best plants you can buy, and our prompt and efficient service plus our superior packing and handling methods will assure you of having top-grade roses this spring. Remember, all Star Roses are guaranteed to grow and bloom.

Here at West Grove we are looking forward to a wonderful rose year, and we are confident you also will share in the inspiration provided by roses if you send your order today. It will be acknowledged at once.

Yours for Gardening Pleasure,

S. B. HUTTON, SR.
Chairman of the Board
THE CONARD-PYLE COMPANY

Two Garden Centers To Serve You

In addition to serving thousands of customers by mail, we have the pleasure of personal contact with many thousands more who visit our garden centers. If you live within driving distance of West Grove or Lancaster, Pennsylvania, perhaps you will find the opportunity this spring or summer to come to see our facilities and the rose fields in bloom. Our West Grove garden center is located just off U. S. Route 1, 35 miles southwest of Philadelphia, 14 miles from Wilmington, Delaware, 65 miles from Baltimore, Maryland. Our Lancaster center is on U. S. 230 (By-Pass) 1/2 mile west of Manheim Pike. Both centers are open 7 days a week, all year around. The rose fields are located near West Grove, and are in bloom from July to October. We would like to have you visit us.

STAR ROSES

The Conard-Pyle Co. West Grove, Pa. 19390

